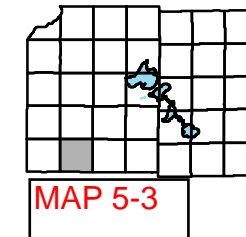


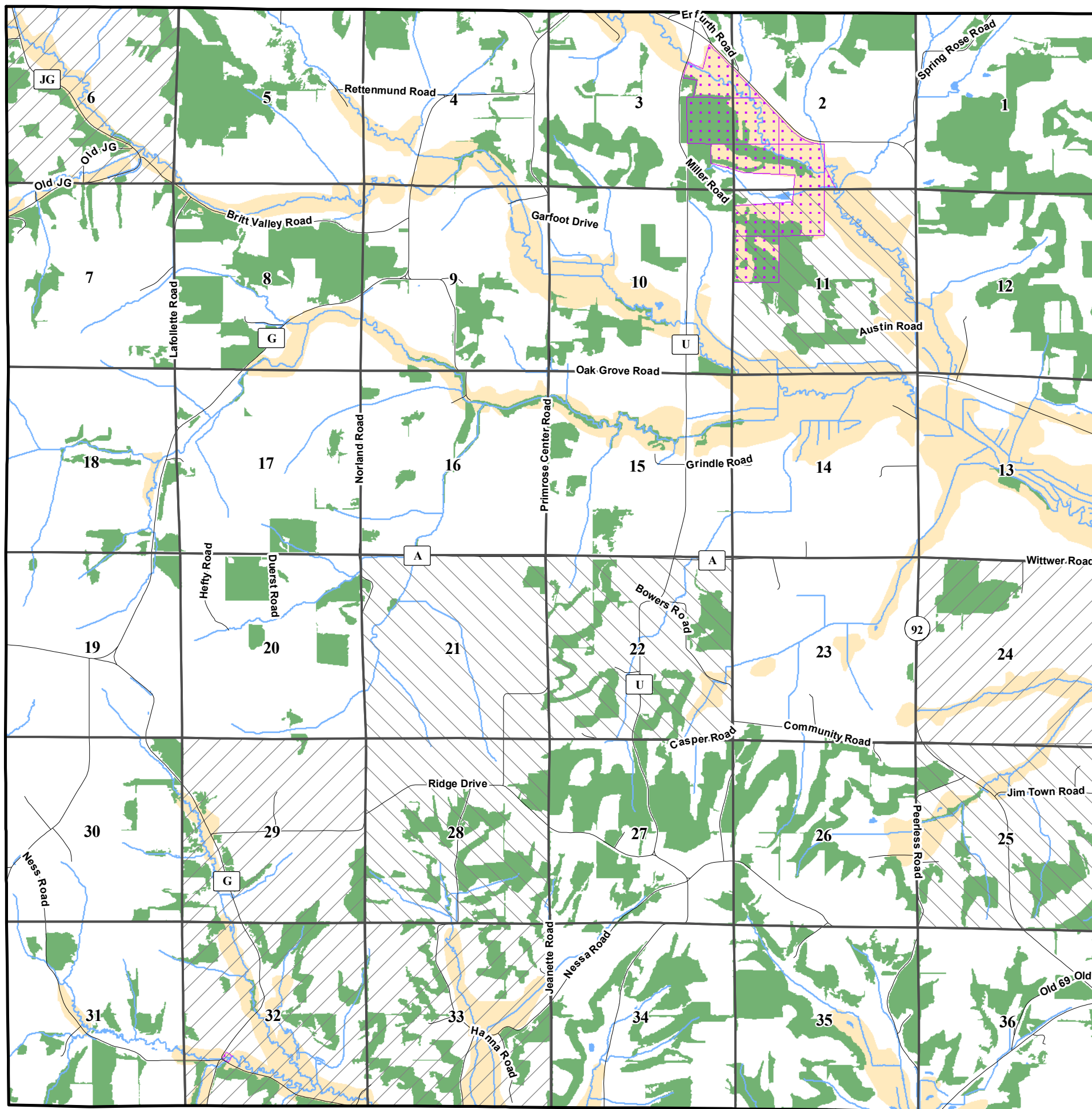
# Town of Primrose









MAP 5-3

## Environmental Features

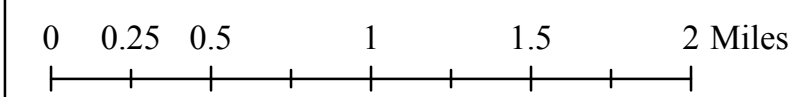
**DRAFT**



### Rare Species

-  Aquatic
-  Terrestrial
-  Both
-  Publicly Owned Land
-  Dedicated Open Space
-  Woodlands

Nov., 2008



Source Info:  
 Environmental Corridor: 04/08, (DCCAPD)  
 Open Space: 2008, (DCRPC)  
 Rare Species: 2004, (WIDNR)  
 Woodland: 2005, (DCCAPD)

This map was prepared through the Dane County Department of Planning and Development in conjunction with the Dane County Land & Water Resources Department, Dane County Land Information Office and the Dane County Community Analysis & Planning Division.